

The background is a deep space scene featuring a dark blue and black void filled with numerous small, bright white stars. Several large, vibrant galaxies are visible, displaying swirling patterns of blue, purple, and pinkish-red light. The galaxies are positioned around the central text, creating a sense of depth and cosmic scale.

USER GUIDE CELESTRON



STEP-BY-STEP SETUP

This page covers how to don and doff the Celestron.

01.

Donning the Celestron:

- Adjust the straps for a comfortable fit, ensuring the device is positioned properly.
- Slide your arms through the straps and secure the device around your torso, tightening as necessary.




02.

Doffing the Celestron:

- Loosen the straps and slide your arms out.
- Carefully remove the device from your torso and store it securely.

03.

Powering On/Off:

- To turn on the Celestron, press and hold the power button until the device activates.
 - To turn it off, press and hold the power button again until the device shuts down.
- 
- 
- 

PERSONALIZE THE PRODUCT

01 EMG STRENGTH CHECK

Perform Specific Movements: The user will be guided through a series of movements to assess their muscle activity.

Optimal Motor Power Adjustment: During this process, Celestron will analyze the Electromyography (EMG) signals and automatically calibrate the motor power to match the user's strength and requirements.

- Regularly check the Electromyography (EMG) strength to ensure the device is responding effectively to your inputs.
- Follow these steps for an accurate check:
 1. Connect the device to the diagnostic tool or app.
 2. Perform a standard movement while monitoring the EMG response.
 3. Compare the readings with baseline values to detect any anomalies or strength inconsistencies.

02 RESISTANCE & ENHANCEMENT

Resistance & Enhancement Modes

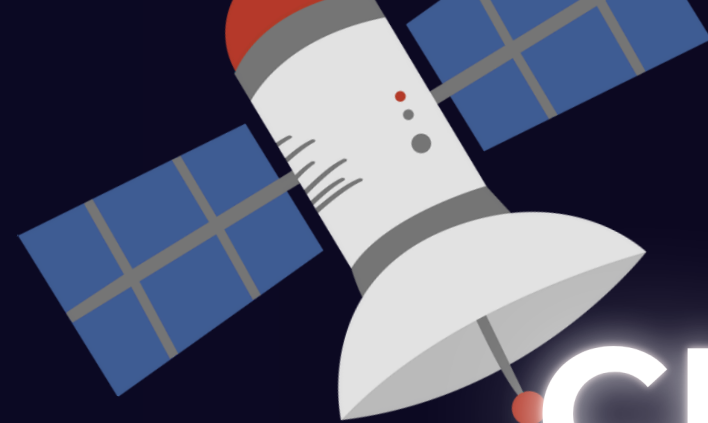
Resistance Mode: Adds controlled resistance for strength training or rehabilitation, helping to build muscle strength.

Enhancement Mode: Provides motor support to reduce effort, ideal for extended use or when extra assistance is needed.

Mode Switch Button:

Toggle between modes using the button on the side of the device.

1. Slide right for Resistance Mode (adds resistance).
2. Slide left for Enhancement Mode (increases motor power).



CHARGING

WHEN TO KNOW BATTERY IS UNCHARGED

The device will display a low-battery warning, such as an indicator light or notification.

Performance may slow down, or the device might power off unexpectedly.

HOW TO CHARGE IT

Connect the device to its compatible charger using the recommended power source.

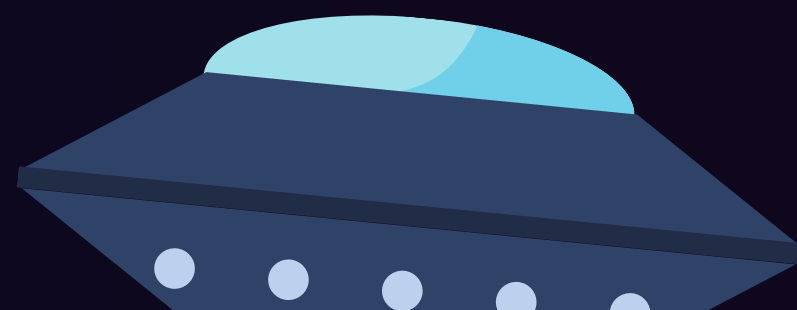
Ensure the charging port is clean and free of debris before plugging in.

Charge until the indicator shows full capacity (e.g., 100% or green light). Avoid overcharging.

TIME INTERVALS OF USE

Fully charge the device before first use and recharge it when the battery level drops below 20%.

Depending on usage, the battery typically lasts 8 hours. For optimal battery health, avoid letting it fully drain repeatedly.



FIRE

Immediately disconnect the device from power if safe and evacuate the area. Use a certified fire extinguisher, not water, and contact emergency services.

OVER RESISTANCE & ENHANCE

Stop using the device and allow it to cool. Check for external causes like faulty wiring or excessive load, and do not start using the product again before contacting with technical support team.

IN CASE OF DANGER

DECEREASED CAPACITY IN CHARGING

Inspect the charging accessories and ensure the power source is functional. If the problem remains, avoid using the device while charging and seek customer support for a battery change.

WORKING INTERMITTENTLY

Restart the device and check for loose connections or damage. Inspect the mechanical parts to ensure they are clean and free of obstructions or debris. If the issue persists, contact technical support.

The background of the entire image is a deep space scene. It features several large, swirling galaxies in shades of blue, purple, and pink. The space is filled with numerous small, bright stars of varying colors, including white, yellow, and blue. The overall effect is a sense of vastness and cosmic wonder.

THANK YOU

THANK YOU FOR PREFERRING CELESTRON!

For further information you can visit our website
www.guardiansinsuit.org and reach our technical
support team via guardiansinsuits.com.